

## Quick Reference Guide

The small rocker switch at the rear of the timer turns it on/off.

The timer has one Control Dial for all functions. To easily see this Control Dial in darkroom conditions the wheel is illuminated slightly from underneath.

To set time, turn the Control Dial in either direction.

To compose and focus the image, hold down the Control Dial until the display shows ‘- -‘

To turn focus off, press the Control Dial.

To start an exposure briefly press the Control Dial – the display counts down from the set interval. To pause the exposure press the Control Dial and the display flashes. To resume press the Control Dial again or to cancel the exposure altogether press and hold the Control Dial.

The optional foot switch has precisely the same effect as pressing the Control Dial (except setting exposure) but frees up both hands for shading.

### The Audible Signal.

The audible signal is optional and, by default, is set to silent. To enable the beep you need to start with the timer switched off. First press and hold down the Control Dial and then switch the unit on. The timer will beep three times to signify that audio has been enabled. To return to silent just repeat.

### Screen Brightness level.

There are 4 brightness levels for the LED screen. It is preset to the lowest brightness level. To change level, dial passed 99 seconds and d1 will display, press the Control Dial repeatedly until the required brightness level is set (d1, d2, d3, d4) then dial back to the exposure numbers. It is recommended on the brighter settings to do a paper fogging test print.

**Note:** Please switch this unit off when not in use.

# Timer 3

## Seconds / F-Stop Timer

### De Vere

#### Instructions for use



*Our policy is one of continuous improvement, therefore the information in this document is subject to change without prior notice. This document is copyright and may not be copied or reproduced in any form without the permission of  
RH Designs Ltd*



**RH Designs Ltd**  
Manufactured & Distributed in the UK

[sales@rhdesigns.co.uk](mailto:sales@rhdesigns.co.uk)

[www.rhdesigns.co.uk](http://www.rhdesigns.co.uk)

## CONTENTS OF THE PACKAGE

The Timer 3 package contains the following items: the Timer 3 De Vere and a De Vere cable. If either of these items are missing or damaged contact your supplier immediately.

### CAUTION

Please read these instructions carefully and fully before installing or using your Timer 3. The voltage rating of the unit is indicated by a tick in the box, on the rear panel, next to the settings recommended for the Timer 3.

### **WARNING: THIS APPLIANCE MUST BE EARTHED**

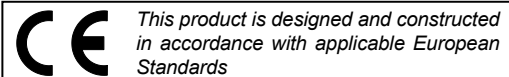
A repair service is available; return the unit to RH Designs (contact details can be found on the front cover of this book).

**Do not attempt to open the unit or to remove any covers, doing so may expose dangerous voltages.**

Do not drop the unit or subject it to mechanical shock or extremes of temperature or humidity. Like other electronic equipment the Timer 3 can be damaged by water or chemical spillage so do not install this equipment where this may happen. Should such spillage occur, disconnect the equipment from the mains supply before attempting to clean it.

### GUARANTEE

This equipment is guaranteed against faulty components or manufacture for a period of two years from the date of original purchase. Should a fault develop within this period please telephone us for advice before returning the unit. If there is a fault we will repair or replace (at our discretion) the equipment at no charge. This guarantee does not affect your statutory rights. Damage due to misuse of this unit and any consequential loss arising out of the use or misuse of the equipment are not covered by this guarantee



### Screen Brightness level.

There are 4 brightness levels for the LED screen. It is preset to the lowest brightness level so to change the level dial past 99 seconds and "d1" will display {fig6}. Then press the Control Dial repeatedly until the required brightness level is set (d1, d2, d3, d4) and then dial back to the exposure numbers to continue. It is recommended on the brighter settings to do a paper fogging test print.

Fig6, Timer3 Brightness Levels



### Setting Seconds or F-Stop's

The Timer 3 is supplied set to 'seconds' as the timer function. To change from 'seconds' to 'F-Stop' timer operation turn the Control Dial until the display goes below 1 second and you should see "tS" displayed, this denotes seconds. Pressing the Control Dial once will change this to "tF" for F-Stop mode. Now when you adjust the set time it will change in 1/6th stop increments (see below). To set it back to seconds just repeat the process and change "tF" to "tS" and the unit will operate in whole seconds again.

### Logarithmic setting of the interval

Like human vision, photographic materials respond to light in a logarithmic way, and this is the way that the Timer 3 is set, although the intervals are displayed in seconds and tenths (the shutter speed and aperture settings of a camera, for instance, are scaled logarithmically).

When turning the control dial (in tF mode) each increment represents a change in exposure of precisely one-sixth of an *f*/stop (about 10%) which is about the subtlest adjustment that most people can observe. For example six clockwise increments of the Control Dial represent a one-stop increase or a doubling of the exposure time. If you have enabled the beep you'll hear a click when the setting is increased or decreased by one step. This feature is very useful if you don't want to take your eyes off the job.

To set a large increment place a fingertip in the shallow indent in the Control Dial and use it to spin the dial - like an old fashioned telephone dial.

## First Switch-on

Switch the Timer 3 on using the small rocker switch on the rear panel {fig2}. The software version is displayed momentarily each time the Timer 3 is switched on followed by it being set to the default 10 seconds visible on the display.

The audible signal is optional and, by default, is set to silent. To enable the beep you need to start with the timer switched off. First press and hold down the Control Dial {fig3} and then switch the unit on. The timer will beep three times to signify that audio has been enabled. It will now click at each increment of the Control Dial as it is turned and in operation it beeps once for each second during the exposure countdown.

To cancel the audible beep, with the unit switched off, press and hold the Control Dial and turn the unit on until you hear one beep followed by another. This confirms that the audio option is now off.

## Operation

The Timer 3 has a Control Dial for all user functions. To set a time turn the Control Dial either clockwise to increase the time set or anti-clockwise to decrease it {fig4}.

To compose and focus the image hold down the Control Dial until the enlarger illuminates and the display shows '—' {fig5}. To turn it off press the Control Dial briefly and the set time reappears. To start the exposure press the Control Dial briefly and the display will count down, in seconds, from the set time.

If you need to pause the Timer 3 during exposure just press the Control Dial briefly and the display flashes. To resume countdown just press the Control Dial briefly again. To cancel the exposure and return to the previously set time, whether in pause or countdown mode, press and hold the Control Dial for longer until the display returns to the original time set.

Using an optional footswitch has precisely the same effect (except setting exposure) as pressing the Control Dial in all operations listed above thus freeing the hands for dodging and burning operations etc.

Fig5, Timer3 Focus



## Contents

Connecting to your De Vere-----	4
Connection to other enlargers -----	5
Operation-----	6
Screen Brightness-----	7
Setting Seconds or F-Stop's-----	7
Logarithmic Settings -----	7
Quick Reference Guide-----	8



## PLEASE NOTE:

Switch off the unit when not in use and before plugging in, or unplugging, the enlarger or footswitch cables.

## SAFETY WARNING:

This unit is designed for the control of photographic enlargers only. Connection of any other equipment to this unit may result in fire or shock hazard and will invalidate all warranties.

## Optional extras.

RH Designs deluxe red footswitch 2m

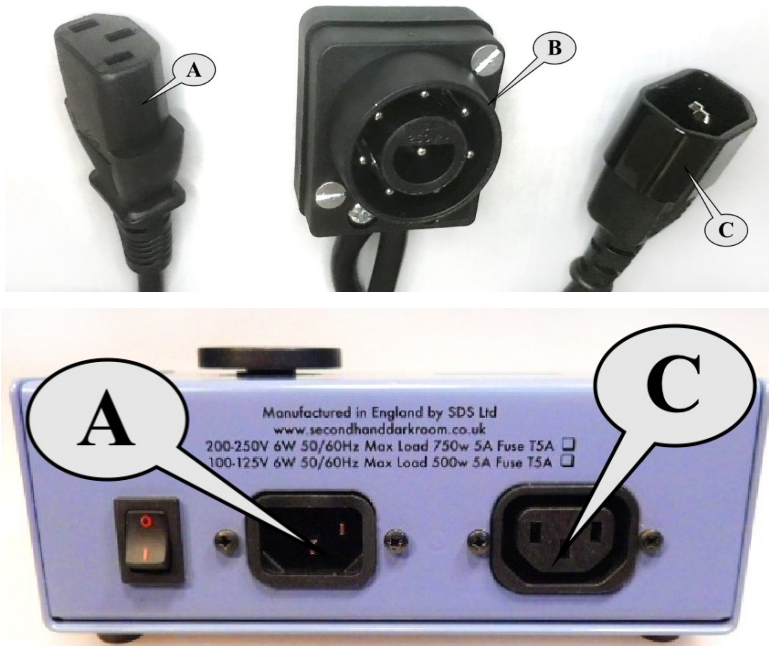


## Connecting to your De Vere Transtab

The Timer 3 De Vere is supplied with a connection lead for your 504 Transtab unit.

Mains is supplied to the Timer from the transformer unit no additional mains connection is used.

Fig1, Cable & Connecting



## Connection to your De Vere

Plug cable A into socket A, plug cable C into socket C and plug cable B into your Transtab. Plug the footswitch in to the front socket if you are using one {fig3}. Switch the Timer 3 on using the small rocker switch on the rear panel {fig2}. The Timer 3 should illuminate showing the software version momentarily followed by the default 10 seconds.

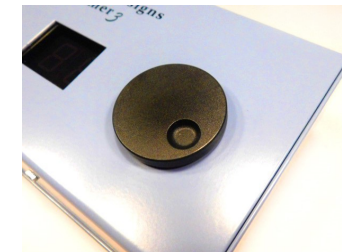
Fig2, Timer3 rear panel



Fig3, Timer3 front panel



Fig4, Timer3 Control Dial



## Connection for other Enlargers

The timer has two main connections at the rear, a male IEC connector for the incoming mains and a female IEC socket for the enlarger {fig2}. A mains lead can be purchased from us with the correct connections for the country of use. We recommend that you use this lead as it will have all the correct pins for optimum operation and safety. We can also supply an IEC plug for use with your enlarger. At the front there is also a  $\varnothing$  2.5mm socket for an optional foot switch. {Fig3}